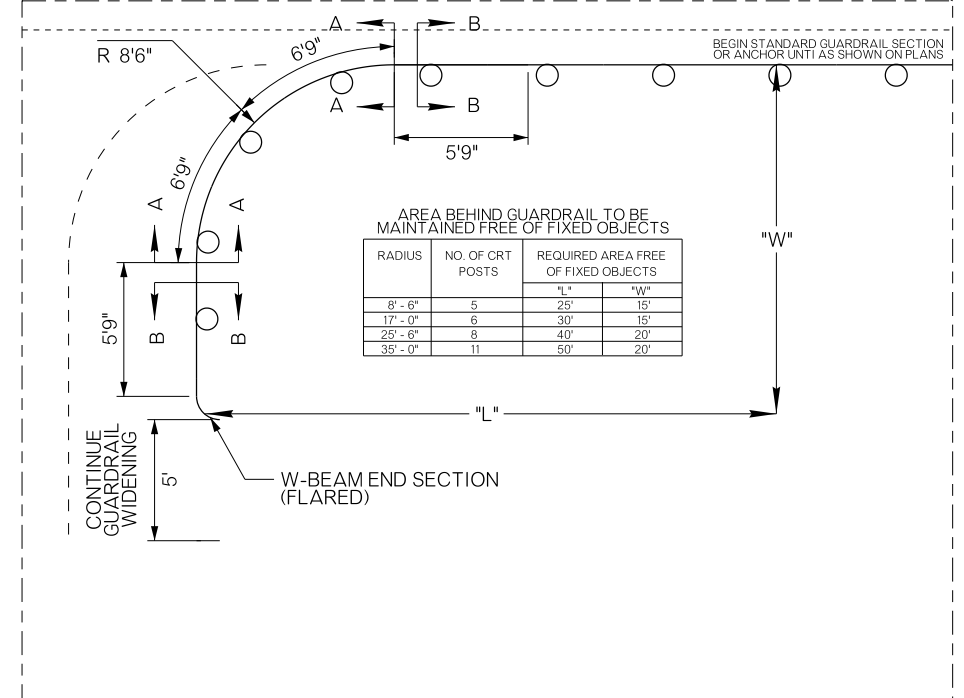
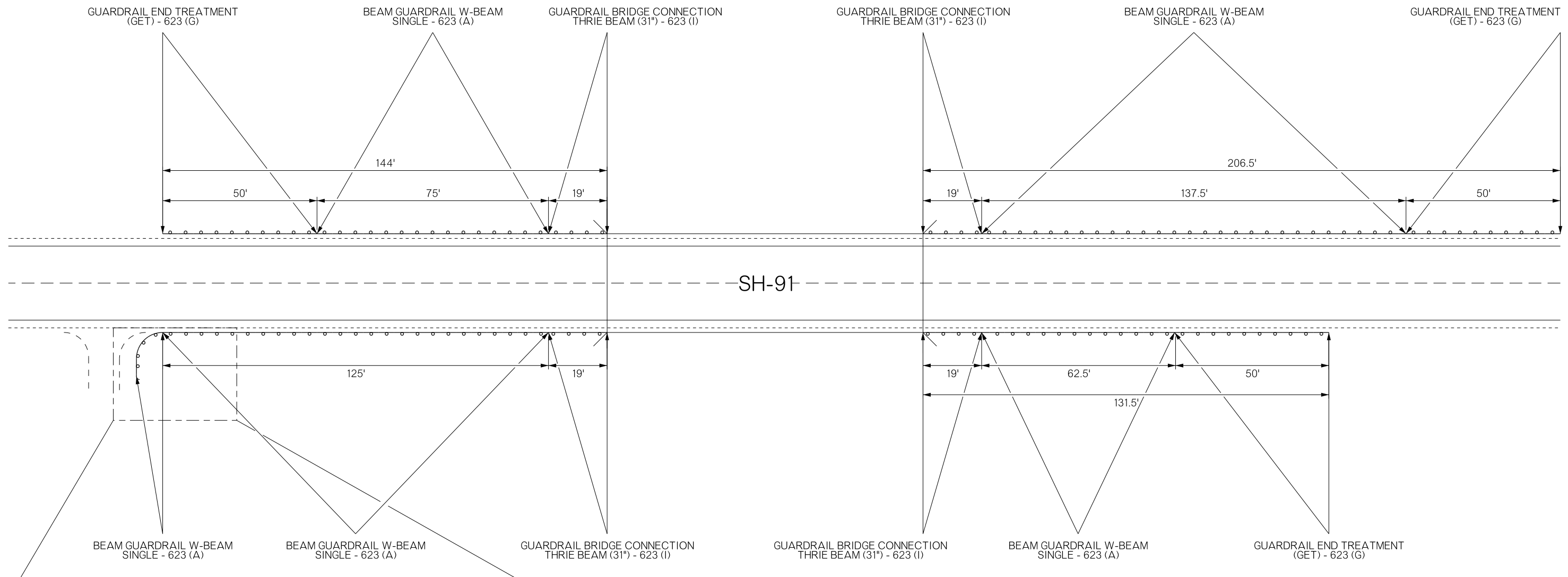
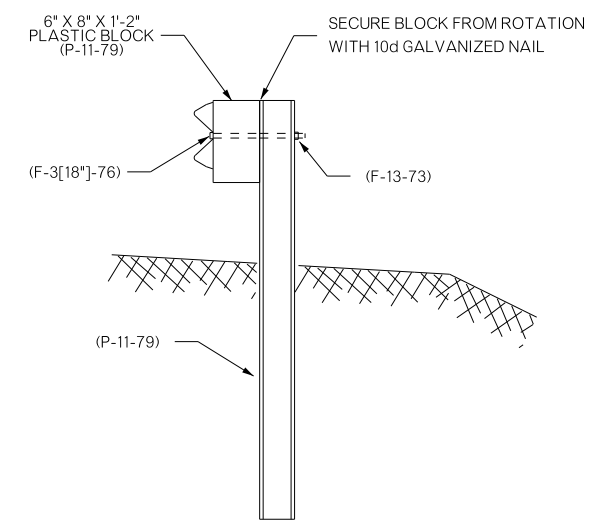
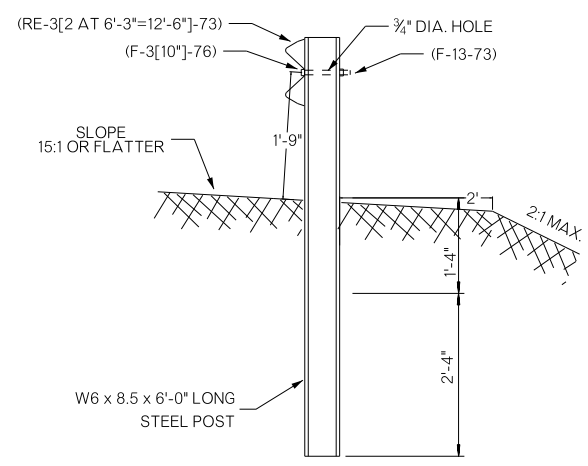


REVISIONS		
REV. NO.	DESCRIPTION	DATE



AREA BEHIND GUARDRAIL TO BE MAINTAINED FREE OF FIXED OBJECTS

RADIUS	NO. OF CRT POSTS	REQUIRED AREA FREE OF FIXED OBJECTS	
		"L"	"W"
8' - 6"	5	25'	15'
17' - 0"	6	30'	15'
25' - 6"	8	40'	20'
35' - 0"	11	50'	20'



SECTION A-A

SECTION B-B

- NOTES:
- DESIGNATIONS IN PARENTHESIS REFERENCE STANDARD ELEMENTS DETAILED IN "A GUIDE TO STANDARDIZED HIGHWAY BARRIER RAIL HARDWARE" 1979, AASHTO-AGC-ARTBA JOINT COOPERATIVE COMMITTEE.
  - NO WASHERS ARE USED ON THE 5/8" BUTTON HEAD BOLTS (F-3[AS REQUIRED]-76) CONNECTING THE RAIL TO THE CONTROLLED RELEASING TERMINAL POSTS (CRT).
  - THE RAIL IS NOT BOLTED TO THE CRT POST AT THE CENTER OF THE NOSE AS SHOWN.
  - THE CURVED GUARDRAIL SECTION SHALL BE SHOP BENT.

NOT TO SCALE

DIVISION 2 SH-91	BRYAN COUNTY	DETAIL: CLD	04/17
GUARDRAIL LAYOUT		CHECK: GF	04/17
		ENGINEER: KCD	04/17
GROUP: ABRAHAM EM: MAAROUF			
STATE OF OKLAHOMA	DEPARTMENT OF TRANSPORTATION	JOBPIECE NO. 32756(04)	SHEET NO. T003